





NEXA Properties are delighted to offer this well presented three bedroom terraced house situated on Heidelberg Road, Southsea.

The ground floor offers a very spacious bay fronted reception room, off the hall is another very good sized open plan kitchen and dining area, perfect for a family.

Upstairs, the house features two generously sized double bedrooms, and a third single bedroom which would be perfect for an office/study or child's room. Also upstairs is a shower room with basin and WC.

Externally the property has a good sized east facing private garden with gravel and wooden storage space.

This property is neutrally decorated throughout, is within walking distance to schools and supermarkets, close to local amenities and public transport links also.

Other benefits include -

Gas central heating  
Double glazing  
Side lean to for garden access  
Under stair storage

Viewings highly recommended.

Contact NEXA to arrange your viewing.

- PERFECT FAMILY HOME
  - AVAILABLE NOW
- CLOSE TO SCHOOLS AND SUPERMARKETS
  - SOUGHT AFTER
- LOCATION
- UPSTAIRS BATHROOM
  - TWO RECEPTIONS
- GOOD SIZE BEDROOMS
- CLOSE TO TRANSPORT LINKS
- LOW MAINTENANCE GARDEN



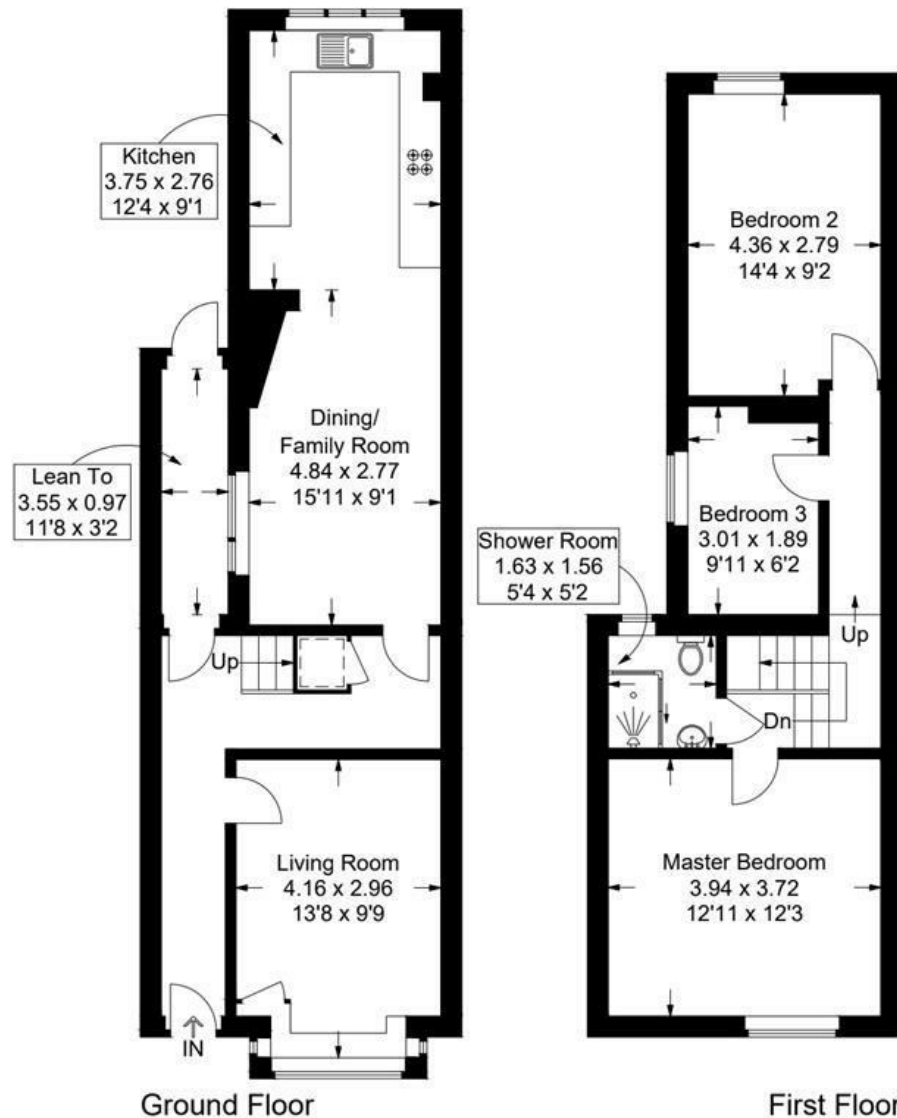
# Heidelberg Road, Southsea

Approximate Gross Internal Area = 95.6 sq m / 1029 sq ft

(Excluding Reduced Headroom / Eaves)

Reduced Headroom = 0.4 sq m / 4 sq ft

Total = 96 sq m / 1033 sq ft



= Reduced headroom below 1.5m / 5'0

This plan is for layout guidance only. Not drawn to scale unless stated. Windows and door openings are approximate. Whilst every care is taken in the preparation of this plan, please check all dimensions, shapes and compass bearings before making any decisions reliant upon them.